

Adobe Photoshop

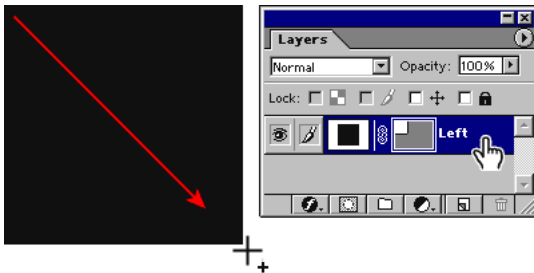
# Create reusable effects with layer styles

Adobe® Photoshop® layer styles are great for creating Web buttons and rollover states. After you've applied a cool combination of effects to a layer, you'll want to save it as a layer style and apply it to other layers.



## 1. Draw a button on a new layer.

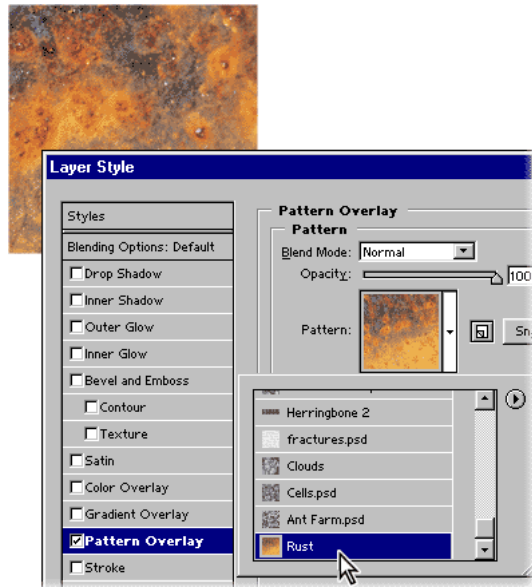
Create a new layer and then use the rectangle tool to draw a button. Now double-click your rectangle button layer to display the Layer Style dialog box.



## 2. Select each effect you want to use and then modify its settings as desired.

Select an effect in the Styles column on the left, then modify its options on the right. You can preview the resulting combination of effects in the Layer Style dialog box.

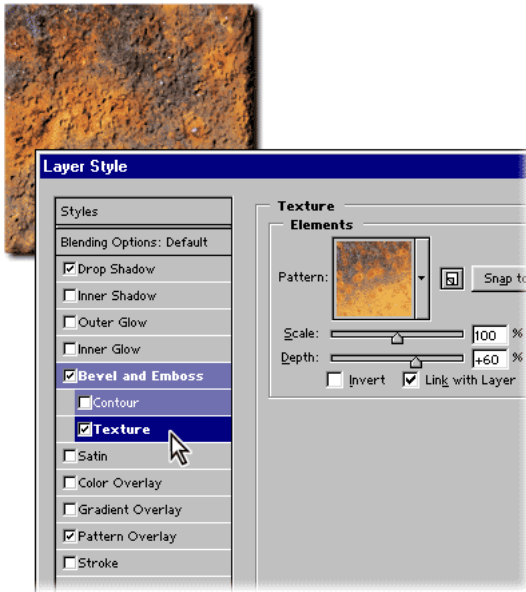
We're using Pattern Overlay, Drop Shadow, and Bevel and Emboss effects. First we selected Pattern Overlay, then clicked the pattern sample box, and selected Rust. When Link with Layer is not checked, you can drag the pattern in the image window to adjust how the pattern is positioned on the layer contents.



### 3. Select and modify other effects.

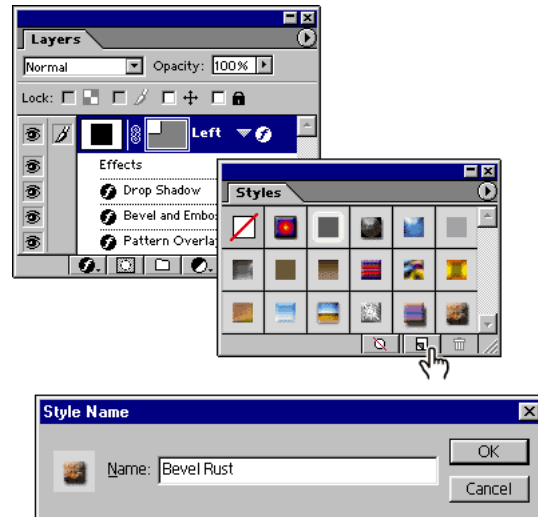
Once you've modified one effect for your layer, you can select and modify other effects that you wish to apply.

We selected Drop Shadow, and changed its mode from Blend to Multiply. For the next effect, we selected Bevel and Emboss, setting the drag Size to 8 px., then we selected Texture. In the Texture panel, we used the Rust pattern again. This time, the Rust pattern creates a 3-dimensional effect on the surface of the layer, embossing the texture of the pattern on the layer.



### 4. Add a new style to save your combination of effects.

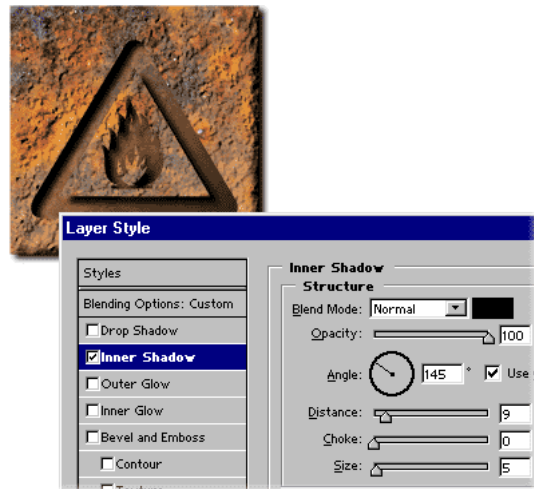
With the layer you've been working on still selected, click the New Style button in the Styles palette. Double click the new style and give it a name. We've named our new style, Bevel Rust. You can then save your new style to the Style palette.



### 5. Create more than one layer style.

Your image can use as many layer styles as you wish to create. In our example, a second combination of effects is saved as a style and applied to the type layer (we used a symbol font).

To recreate the style we used on the text layer, select Inner Shadow, Gradient Overlay, and Pattern Overlay. To customize the Gradient Overlay, set the Blend Mode to Multiply. For the Pattern Overlay, choose the same rust pattern so that the color is consistent for both layers.



## 6. Apply the styles to another layer.

Layer styles make it easy to apply the same effects to the contents of multiple layers. In our example, we've applied our newly-created layer styles to a second pair of rectangle and text layers.

Saving combinations of effects as layer styles not only saves you time, but it keeps your effects consistent. You won't have to remember all the settings and options you chose for each effect.

